

Metallic Anchors for Refractories



RDS-V2
"V"
(AR-702, RA-2)



RDS-BA3
Brick Anchor
(AR-733, RA-3)



RDS-V4
Flat Based "V"
(AR-734, RA-4)



RDS-V5
Bullhorn
(AR-735, RA-5)



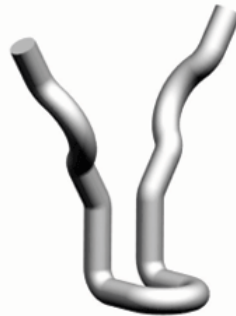
RDS-V6
Split-Tine Two Component Lining
(AR-736, RA-6)



RDS-Y7
Stud Weld "Y"
(AR-737, RA-7)



RDS-V8
Hand Weld "V" Light-Med. Castable
(AR-738, RA-8)



RDS-V9
Footed "V" Med.-Heavy Castable
(AR-739, RA-9)



RDS-V10
Footed "V" Med.-Heavy Castable
(AR 740, RA-10)



RDS-V11
Double-Hook Stud Weld "V"
(AR-741, RA-11)



RDS-V12
Hand Weld "V"- Light-Med.
Castable
(AR-744, RA-12)



RDS-V3
Hand Weld Steerhorn-Light Weight
Castable
(AR-731, RA-13)



RDS-V14
Nuted-"V" Used with
Threaded Stud
(AR 801-TB, RA-14)



RDS-V15
Nuted-"V" Used with
Threaded Stud
(AR 803-TB, RA-15)



RDS-V16
Nuted-"V" Used with
Threaded Stud
(AR 804-TB, RA-16)



RDS-V17
Hand Weld Double Hook "V"
(AR-746, RA-17)



RDS-SD18
Stud Weld T-Slot Stand-off
(AR-263, RA-18)



RDA-SO29
Stand-Off for Hex Steel
(AS-264, RA-29)



RDA-BA1
Used to Anchor Tile
in High Density Linings
(AS-271, RA-30)



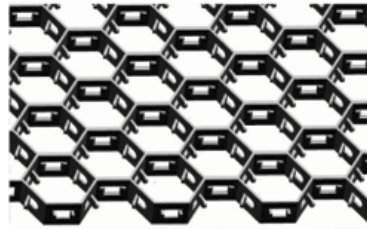
RDA-BA2
Used to Anchor Tile
in High Density Linings
(AS-271, RA-31)



RDS-STUD
Threaded Studs
(RA-35)



RDS-BWN
Hex Bolt, Flat Washer & Hex Nut
(RA-36)



RDS-39
Hex Mesh Abrasion Linings
(RA-39)



RDS-54
K-Bar, Stud Weldable Hex Steel
(RA-54)



RDS-V42
Footed Double Hook "V"
(RA-42)



RDS-CT43
Christmas Tree
(RA-43)



RDS-C24
"C" Clip to Attach Refractory Tile
(AS-273, RA-24)



RDA-85-4000
85% Phos. Bounded Ceramic Anchor