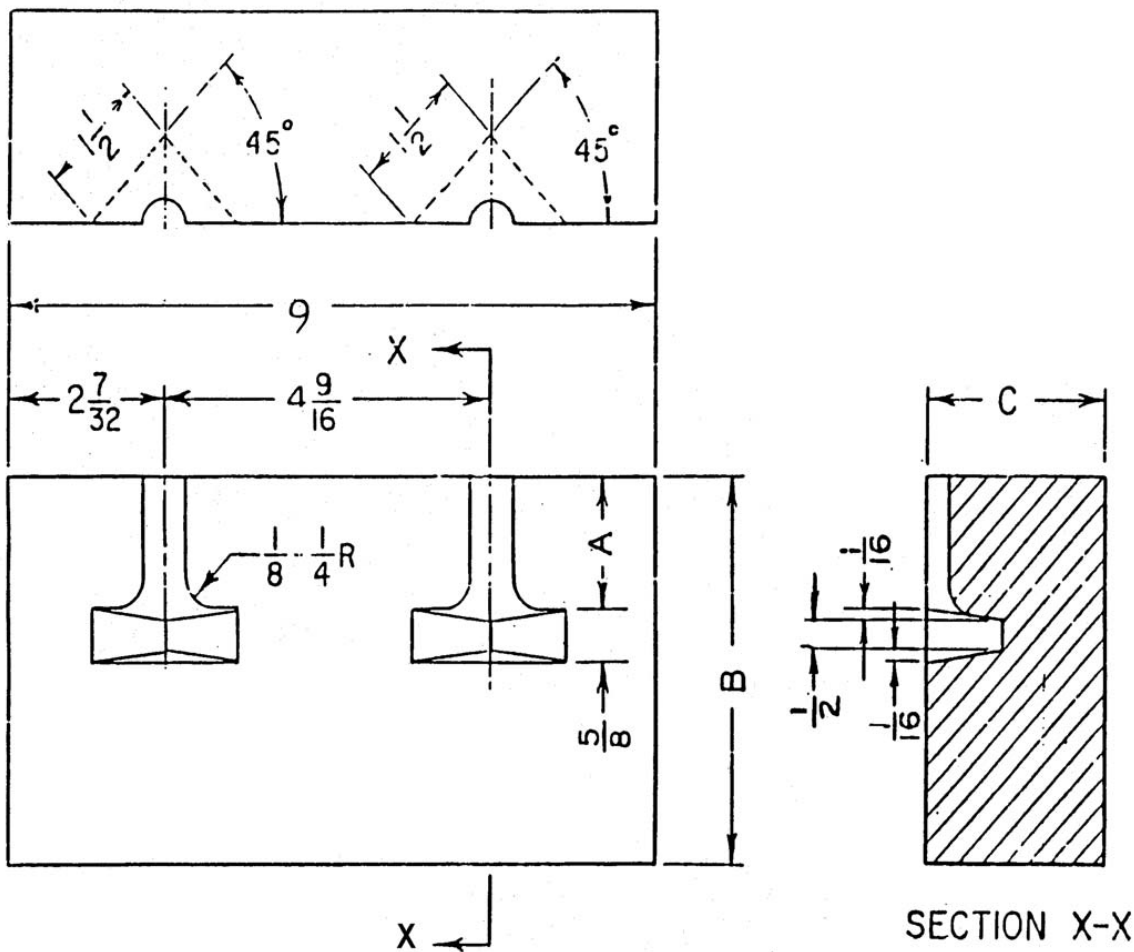


TECHNICAL DATA
ANCHOR BRICK



Brick Anchor – B43401, B51000 & B62112

| | <u>A</u> | <u>B</u> | <u>C</u> |
|--------------------------|----------|----------|----------|
| B43401 9 x 4 1/2 x 2 1/2 | 1 | 4 1/2 | 2 1/2 |
| B43401 9 x 4 1/2 x 3 | 1 | 4 1/2 | 3 |
| B51000 9 x 6 x 2 1/2 | 1 1/2 | 6 | 2 1/2 |
| B51000 9 x 6 x 3 | 1 1/2 | 6 | 3 |
| B62112 9 x 6 3/4 x 2 1/2 | 1 1/2 | 6 3/4 | 2 1/2 |
| B62112 9 x 6 3/4 x 3 | 1 1/2 | 6 3/4 | 3 |



DWG – B43401, B51000 & B62112

Rev. Number 1

Date 3/15/2008

Refractory Depot, Inc.
PO Box 26188
Collegeville, PA 19426